

2011 – 2012 Series



BAROQUE
& BEYOND
North Carolina

Period Music Concerts
~
Historical Instruments



Artistic Director of the series is Beverly Biggs (harpsichord and fortepiano). Bev is a North Carolina native who moved back to N.C. after living for many years in the Pacific Northwest. While in Spokane, Washington, she founded and served as co-artistic director of two period music organizations, where her activities included performing, recording and touring.

BAROQUE
& BEYOND
North Carolina



2011-2012 Concert Series
Order NOW and save!

Preservation Society of Chapel Hill
610 East Rosemary Street
Chapel Hill, NC 27514

2011 – 2012



BAROQUE
& BEYOND
North Carolina

Period Music Concerts
~
Historical Instruments

September 18, 2011
January 29, 2012
March 4, 2012

Presented by the
Preservation Society of
Chapel Hill



Baroque & Beyond

Shepherd on the Rock Sept. 18, 2011

Schubert's *Shepherd on the Rock* is featured, with clarinet, soprano and fortepiano. Jimmy Gilmore and Florence Peacock join Beverly Biggs for this beloved early romantic work. The ensemble is rounded out by John Pruett and Stephanie Vial (violin and cello). The program includes a remarkable Beethoven Trio for clarinet and strings, and works by CPE Bach and Haydn.



Jimmy Gilmore



Florence Peacock

Goddess in the Grove Jan. 29, 2012

This French baroque program takes its theme from a cantata by Boismortier — a complicated but delightful story, sung by Florence Peacock, soprano. Baroque oboist Alicia Chapman is featured, along with gambist Gail Schroder. The rousing finale, with harpsichordists Elaine Funaro and Beverly Biggs, is Royer's *March of the Scythians*.



Alicia Chapman



Elaine Funaro

Gulliver & Gusto March 4, 2012

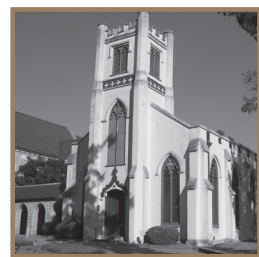


Andrew Bonner

Late baroque music *con gusto!* Telemann's *Gulliver Suite* with violinists Andrew Bonner and Leah Peroutka; a sizzling continuo band (cello, bass, harpsichord) and soprano Penelope Jensen, in instrumental works and cantatas of the High Baroque.

2011 – 2012 Series

Chapel Hill Venues



September & March

The historic chapel at The Chapel of the Cross. Larger venue with excellent sight line and acoustics.

304 E. Franklin Street



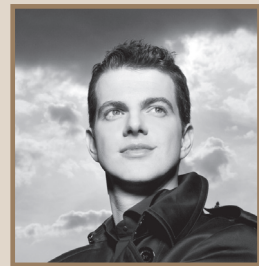
January 29, 2012

The home of Florence and James Peacock.

306 N. Boundary Street

Sunday afternoons at 3:00 p.m. Reception follows the concert.

A Special Offer for our Subscribers



*B*aroque & Beyond patrons will receive a special 20% off discount code (for up to two tickets) for the Oct. 26 performance of *Apollo's Fire* (baroque orchestra) featuring the acclaimed French countertenor **Philippe Jaroussky** (presented by Duke Performances). This young French countertenor has taken Europe by storm and is quickly winning over America. Jaroussky sings with the soul of an angel — a stunning virtuoso, whose musicianship is unforgettable.

Subscribe Now and Save!

Subscriber Benefits:

- Save more than 15%
- Reserved seating for subscribers (in front rows, until five minutes before concert time)
- Discount code for Jaroussky concert
- Priority renewal next season

Series price — \$45 for 3 concerts

YES, please reserve my seats!

Number of SERIES tickets _____

Tax deductible contribution for _____

Baroque & Beyond concerts \$ _____

TOTAL ENCLOSED \$ _____

Name _____

Address _____

City/Zip _____

Day phone _____

E-mail _____

- I would like to receive the Society's "Preservation Notes" newsletter.

Mail your SERIES ticket order to:

(with checks payable to)
Preservation Society of Chapel Hill
610 East Rosemary Street
Chapel Hill, NC 27514

Single tickets \$18 — available after Labor Day by mail (check or MC/VISA) or by phone — call 919.942.7818. Single tickets will also be available at the door, subject to availability.

www.baroqueandbeyond.org
www.chapelhillpreservation.com

